



JFE

JFEBEARTM

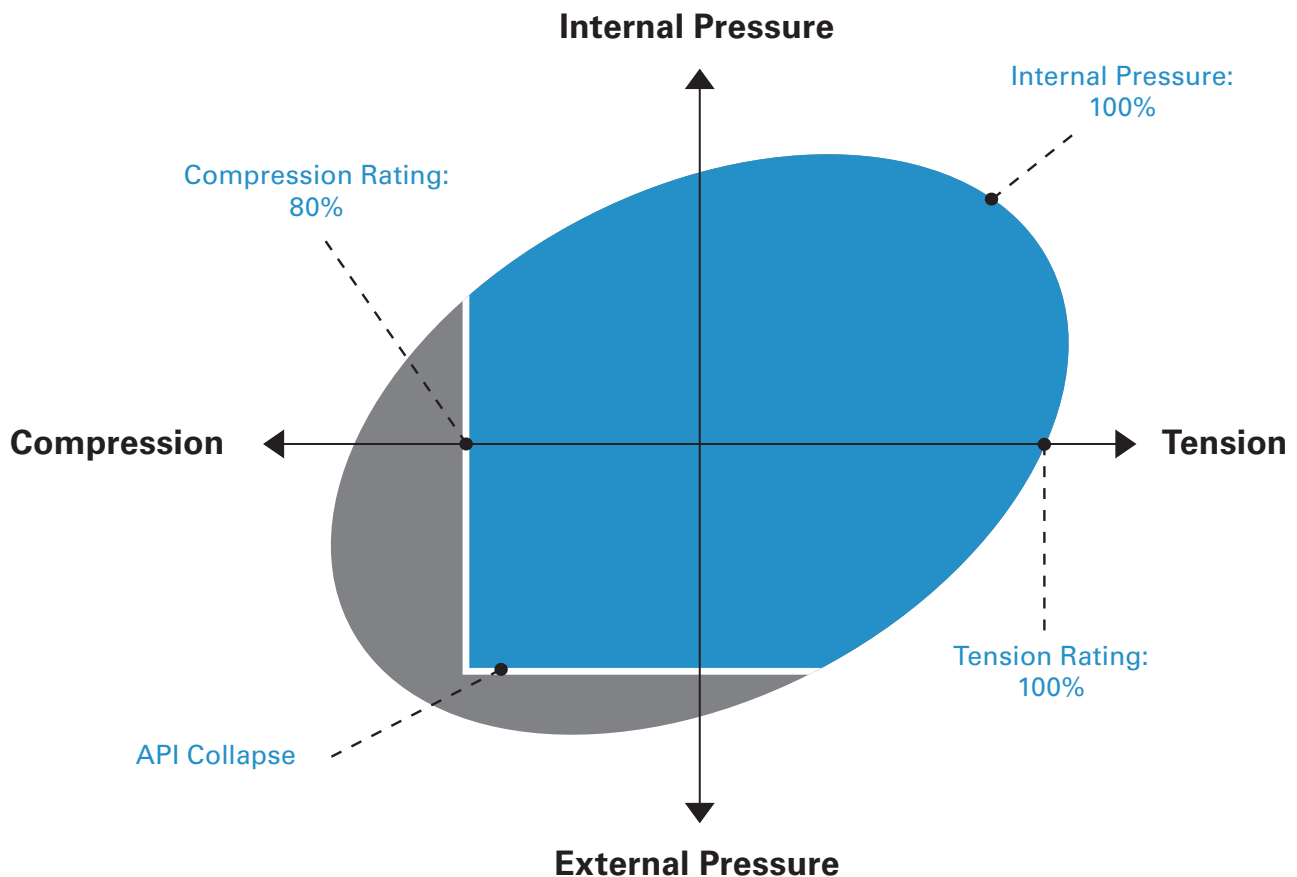
Premium Connection



JFE Steel Corporation



JFEBEAR™ Connection Performance Envelope



Available Size Range

2³/₈" to 9⁵/₈"

Wall Thickness

Up to 0.687"

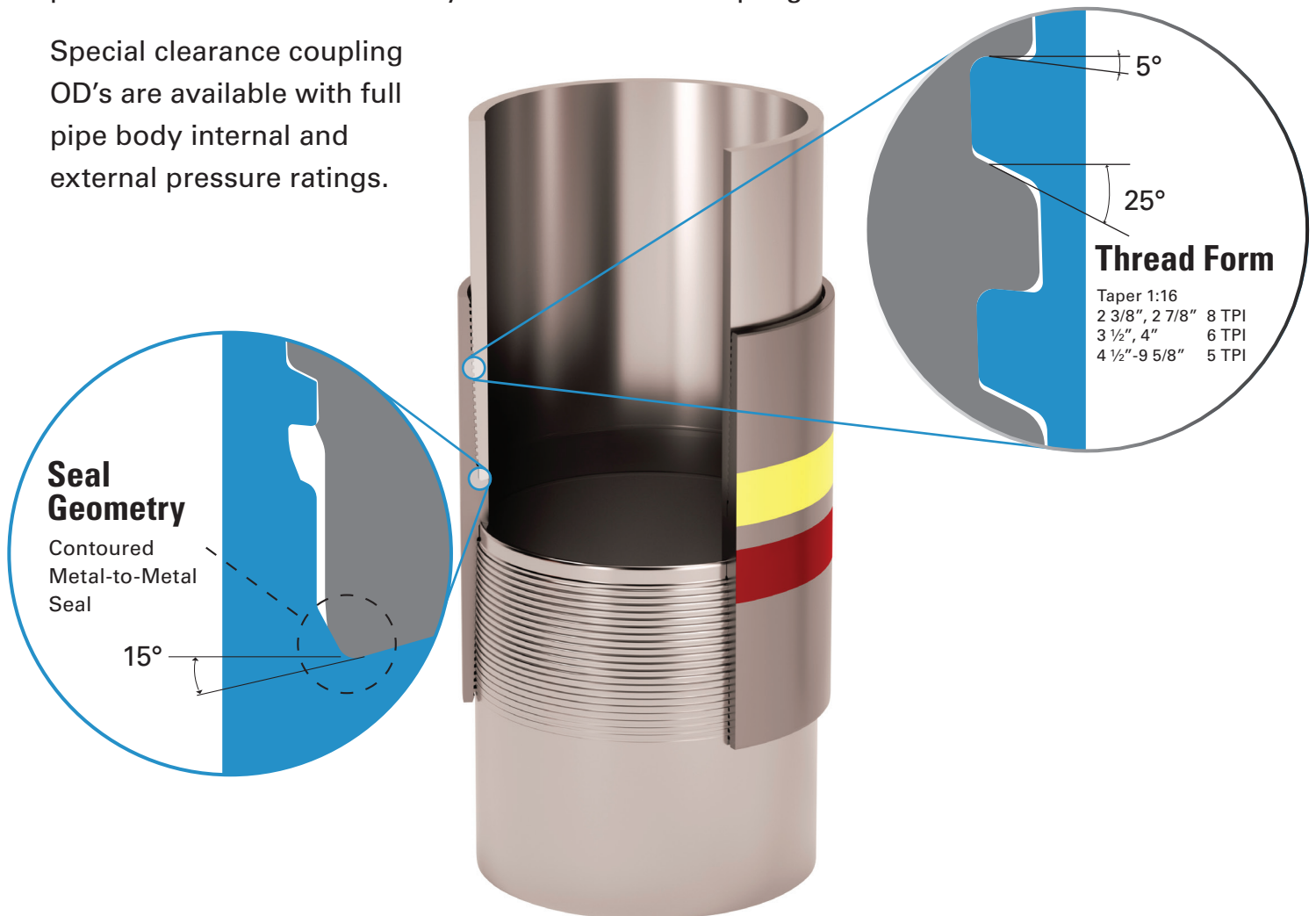
- Run-out pin thread and coupling provide 100% pipe body tension
- Standard and special clearance coupling ODs
- Carbon steel and Chrome grades
- Streamlined ID profile design
- Tested with ISO 13679 2002 and DIS 2009 and field-proven
- Available with the Hunting CLEAR-RUN™ option



DESIGN FEATURES

JFEBEAR™ has been designed and tested to meet the needs for critical well loads. The design incorporates metal-to-metal seals with a 15° internal torque shoulder to ensure sealing under extreme loads. The negative load flank thread form and coupled design provide 100% tensile efficiency for the standard coupling.

Special clearance coupling OD's are available with full pipe body internal and external pressure ratings.



Design Advantage

Negative (-5°) load flank angle on threads ➔ Superior bending capability due to hook threads

25° angle for thread stabbing flank ➔ Excellent stabbing performance due to high stabbing flank angle

15° torque shoulder ➔ Reduced hoop stress

Reduced gap between stabbing flanks on pipe and coupling thread ➔ High compression rating & galling resistance due to optimum gap

Contour metal-to-metal seal between pin and coupling ➔ Galling resistance due to point seal type

STANDARD CONNECTIONS			PIPE				CONNECTION						80 KSI		
OD	Nominal Weight	Nominal Wall	Nominal Pipe ID	Pipe Area	Drift	Special Drift	Thds/in	Standard Coupling OD	101% Coupling OD	Coupling ID	Make-Up Loss	Coupling Length	Joint Strength	Internal Pressure	Collapse Pressure
in	lb/ft	in	in	in ²	in	in	tpi	in	in	in	in	in	kips	psi	psi
2 3/8	4.60	0.190	1.995	1.304	1.901		8	2.728		1.999	2.303	5.425	104	11200	11780
	5.80	0.254	1.867	1.692	1.773		8	2.826		1.930	2.303	5.425	135	14970	15280
	6.60	0.295	1.785	1.928	1.691		8	2.883		1.863	2.303	5.425	154	17390	17410
	7.35	0.336	1.703	2.152	1.609		8	2.883		1.809	2.303	5.425	172	19810	19430
2 7/8	6.40	0.217	2.441	1.812	2.347		8	3.304		2.441	2.678	6.175	145	10570	11170
	7.80	0.276	2.323	2.254	2.229		8	3.368		2.364	2.678	6.175	180	13440	13890
	8.60	0.308	2.259	2.484	2.165		8	3.391		2.330	2.678	6.175	199	15000	15300
	9.35	0.340	2.195	2.708	2.101		8	3.391		2.281	2.678	6.175	217	16560	16680
	10.50	0.392	2.091	3.058	1.997		8	3.514		2.213	2.678	6.175	245	19090	18840
	11.50	0.440	1.995	3.366	1.901		8	3.514		2.151	2.678	6.175	269	21430	20740
3 1/2	7.70	0.216	3.068	2.228	2.943		6	3.883		3.019	3.135	7.090	178	8640	7870
	9.20	0.254	2.992	2.590	2.867		6	3.883		2.963	3.135	7.090	207	10160	10540
	10.20	0.289	2.922	2.915	2.797		6	4.000		2.915	3.135	7.090	233	11560	12120
	12.70	0.375	2.750	3.682	2.625		6	4.122		2.853	3.135	7.090	295	15000	15310
	14.30	0.430	2.640	4.147	2.515		6	4.191		2.783	3.135	7.090	332	17200	17240
	15.50	0.476	2.548	4.522	2.423		6	4.191		2.717	3.135	7.090	362	19040	18800
	17.00	0.530	2.440	4.945	2.315		6	4.255		2.668	3.135	7.090	396	21200	20560
4	9.50	0.226	3.548	2.680	3.423		6	4.384		3.498	3.468	7.788	214	7910	6590
	10.70	0.262	3.476	3.077	3.351		6	4.450		3.438	3.484	7.788	246	9170	8800
	13.20	0.330	3.340	3.805	3.215		6	4.535		3.368	3.484	7.788	304	11550	12110
	14.80	0.380	3.240	4.322	3.115		6	4.587		3.320	3.484	7.788	346	13300	13760
	16.10	0.415	3.170	4.674	3.045		6	4.612		3.292	3.484	7.788	374	14530	14880
4 1/2	11.60	0.250	4.000	3.338	3.875		5	5.000	4.871	3.967	4.430	9.969	267	7780	6360
	12.60	0.271	3.958	3.600	3.833		5	5.000	4.906	3.936	4.430	9.969	288	8430	7500
	13.50	0.290	3.920	3.836	3.795		5	5.051	4.936	3.912	4.430	9.969	307	9020	8540
	15.20	0.337	3.826	4.407	3.701		5	5.148	5.010	3.852	4.430	9.969	353	10480	11080
	17.00	0.380	3.740	4.918	3.615		5	5.148	5.075	3.787	4.430	9.969	393	11820	12370
	18.90	0.430	3.640	5.498	3.515		5	5.148	5.148	3.709	4.430	9.969	440	13380	13830
	21.50	0.500	3.500	6.283	3.375		5	5.324	5.246	3.606	4.430	9.969	503	15560	15800
	23.70	0.560	3.380	6.932	3.255		5	5.324	5.324	3.495	4.430	9.969	555	17420	17430
5	13.00	0.253	4.494	3.773	4.369		5	5.563	5.368	4.446	4.630	10.369	302	7080	5140
	15.00	0.296	4.408	4.374	4.283		5	5.563	5.440	4.391	4.630	10.369	350	8290	7250
	18.00	0.362	4.276	5.275	4.151		5	5.639	5.545	4.303	4.630	10.369	422	10140	10500
	21.40	0.437	4.126	6.264	4.001		5	5.707	5.659	4.200	4.630	10.369	501	12240	12760
	23.20	0.478	4.044	6.791	3.919		5	5.750	5.718	4.143	4.630	10.369	543	13380	13830
	24.10	0.500	4.000	7.069	3.875		5	5.750	5.750	4.123	4.630	10.369	565	14000	14400

Note: All data published in this catalog is accurate at time of publishing and are subject to change. Please consult JFETC.com for current performance and torque data.

	85 KSI				95 KSI				110 KSI				125 KSI			
Comp.	Joint Strength	Internal Pressure	Collapse Pressure	Comp.	Joint Strength	Internal Pressure	Collapse Pressure	Comp.	Joint Strength	Internal Pressure	Collapse Pressure	Comp.	Joint Strength	Internal Pressure	Collapse Pressure	Comp.
kips	kips	psi	psi	kips	kips	psi	psi	kips	kips	psi	psi	kips	kips	psi	psi	kips
83	111	11900	12510	89	124	13300	13980	99	143	15400	16130	115	163	17500	17900	130
108	144	15910	16240	115	161	17780	18150	129	186	20590	21010	149	212	23390	23880	169
123	164	18480	18490	131	183	20650	20670	147	212	23910	23930	170	241	27170	27200	193
138	183	21040	20650	146	204	23520	23080	164	237	27230	26720	189	269	30950	30360	215
116	154	11230	11820	123	172	12550	12940	138	199	14530	14550	159	227	16510	16070	181
144	192	14280	14750	153	214	15960	16490	171	248	18480	19090	198	282	21000	21700	225
159	211	15940	16260	169	236	17810	18170	189	273	20620	21040	219	310	23430	23910	248
173	230	17590	17730	184	257	19660	19810	206	298	22770	22940	238	338	25870	26070	271
196	260	20280	20020	208	290	22670	22370	232	336	26250	25910	269	382	29830	29440	306
215	286	22770	22040	229	320	25440	24630	256	370	29460	28520	296	421	33480	32410	337
143	189	9180	8200	152	212	10260	8850	169	245	11880	9730	196	279	13500	10500	223
166	220	10800	11050	176	246	12070	12080	197	285	13970	13530	228	324	15880	14890	259
187	248	12280	12880	198	277	13730	14390	222	321	15900	16670	257	364	18060	18940	292
236	313	15940	16260	250	350	17810	18180	280	405	20630	21050	324	460	23440	23920	368
265	353	18280	18320	282	394	20430	20480	315	456	23650	23710	365	518	26880	26940	415
289	384	20230	19980	308	430	22610	22330	344	497	26180	25850	398	565	29750	29380	452
316	420	22530	21840	336	470	25180	24410	376	544	29150	28270	435	618	33130	32120	495
171	228	8400	6840	182	255	9390	7310	204	295	10880	7910	236	335	12360	8390	268
197	262	9740	9200	209	292	10890	9980	234	338	12610	11060	271	385	14330	12030	308
244	323	12270	12870	259	361	13720	14380	289	419	15880	16650	335	476	18050	18910	380
277	367	14130	14620	294	411	15790	16340	328	475	18290	18910	380	540	20780	21490	432
299	397	15430	15810	318	444	17250	17670	355	514	19970	20460	411	584	22700	23250	467
214	284	8260	6590	227	317	9240	7030	254	367	10690	7580	294	417	12150	8000	334
230	306	8960	7810	245	342	10010	8410	274	396	11590	9210	317	450	13170	9890	360
245	326	9590	8920	261	364	10710	9660	292	422	12410	10690	338	479	14100	11600	384
282	375	11140	11660	300	419	12450	12760	335	485	14420	14340	388	551	16380	15830	441
315	418	12560	13140	334	467	14040	14690	374	541	16260	17010	433	615	18470	19330	492
352	467	14210	14690	374	522	15890	16420	418	605	18390	19010	484	687	20900	21610	550
402	534	16530	16790	427	597	18470	18770	478	691	21390	21730	553	785	24310	24690	628
444	589	18510	18520	471	659	20690	20700	527	762	23960	23970	610	866	27220	27240	693
241	321	7530	5290	257	358	8410	5560	287	415	9740	5840	332	472	11070	6050	377
280	372	8810	7540	297	416	9840	8110	332	481	11400	8850	385	547	12950	9480	437
338	448	10770	11010	359	501	12040	12030	401	580	13940	13470	464	659	15840	14820	527
401	532	13000	13560	426	595	14530	15150	476	689	16820	17550	551	783	19120	19940	626
435	577	14220	14700	462	645	15890	16430	516	747	18400	19020	598	849	20910	21620	679
452	601	14880	15300	481	672	16630	17100	537	778	19250	19800	622	884	21880	22500	707

JFEBEAR™ PERFORMANCE



STANDARD CONNECTIONS			PIPE				CONNECTION						80 KSI		
OD	Weight	W.T. Nominal Wall	Nominal Pipe ID	Pipe Area	Drift	Special Drift	Thds/in	Standard Coupling OD	101% Coupling OD	Coupling ID	Make-Up Loss	Coupling Length	Joint Strength	Internal Pressure	Collapse Pressure
in	lb/ft	in	in	in ²	in	in	tpi	in	in	in	in	in	kips	psi	psi
5 1/2	15.50	0.275	4.950	4.514	4.825		5	6.050	5.909	4.929	4.630	10.369	361	7000	4990
	17.00	0.304	4.892	4.962	4.767		5	6.050	5.958	4.879	4.630	10.369	397	7740	6290
	20.00	0.361	4.778	5.828	4.653		5	6.104	6.050	4.779	4.630	10.369	466	9190	8830
	23.00	0.415	4.670	6.630	4.545		5	6.135	6.135	4.684	4.630	10.369	530	10560	11160
	26.00	0.476	4.548	7.513	4.423		5	6.262	6.227	4.650	4.630	10.369	601	12120	12650
	26.80	0.500	4.500	7.854	4.375		5	6.262	6.262	4.606	4.630	10.369	628	12730	13220
6 5/8	20.00	0.288	6.049	5.734	5.924		5	7.161	7.052	6.039	4.830	10.969	459	6090	3480
	24.00	0.352	5.921	6.937	5.796		5	7.277	7.161	5.926	4.830	10.969	555	7440	5760
	28.00	0.417	5.791	8.133	5.666		5	7.346	7.268	5.819	4.830	10.969	651	8810	8170
	32.00	0.475	5.675	9.177	5.550		5	7.390	7.360	5.785	4.830	10.969	734	10040	10320
7	23.00	0.317	6.366	6.655	6.241	6.250	5	7.693	7.467	6.305	5.030	11.369	532	6340	3830
	26.00	0.362	6.276	7.549	6.151		5	7.693	7.544	6.252	5.030	11.369	604	7240	5410
	29.00	0.408	6.184	8.449	6.059		5	7.693	7.620	6.199	5.030	11.369	676	8160	7030
	32.00	0.453	6.094	9.317	5.969	6.000	5	7.693	7.693	6.130	5.030	11.369	745	9060	8610
	35.00	0.498	6.004	10.172	5.879		5	7.829	7.764	6.100	5.030	11.369	814	9960	10190
	38.00	0.540	5.920	10.959	5.795		5	7.829	7.829	6.056	5.030	11.369	877	10800	11390
	42.70	0.625	5.750	12.517	5.625		5	8.045	7.958	5.969	5.030	11.369	1001	12500	13010
46.40	0.687	5.626	13.625	5.501		5	8.045	8.045	5.911	5.030	11.369	1090	13740	14160	
7 5/8	29.70	0.375	6.875	8.541	6.750		5	8.277	8.185	7.024	5.230	11.769	683	6890	4790
	33.70	0.430	6.765	9.720	6.640		5	8.277	8.277	6.920	5.230	11.769	778	7900	6560
	39.00	0.500	6.625	11.192	6.500		5	8.500	8.390	6.789	5.230	11.769	895	9180	8820
	42.80	0.562	6.501	12.470	6.376		5	8.500	8.488	6.693	5.230	11.769	998	10320	10820
	45.30	0.595	6.435	13.141	6.310		5	8.538	8.538	6.660	5.230	11.769	1051	10920	11510
7 3/4	46.10	0.595	6.560	13.374	6.435	6.500	5	8.665	8.665	6.790	5.230	11.769	1070	10750	11340
8 5/8	32.00	0.352	7.921	9.149	7.796	7.875	5	9.318	9.151	8.078	5.230	11.769	732	5710	3050
	36.00	0.400	7.825	10.336	7.700		5	9.318	9.234	7.986	5.230	11.769	827	6490	4100
	40.00	0.450	7.725	11.557	7.600	7.625	5	9.318	9.318	7.890	5.230	11.769	925	7300	5530
	44.00	0.500	7.625	12.763	7.500		5	9.625	9.401	7.796	5.230	11.769	1021	8120	6950
	49.00	0.557	7.511	14.118	7.386		5	9.625	9.493	7.695	5.230	11.769	1129	9040	8570
9 5/8	36.00	0.352	8.921	10.254	8.765		5	10.485	10.155	9.086	5.230	11.769	820	5120	2370
	40.00	0.395	8.835	11.454	8.679	8.750	5	10.485	10.231	9.006	5.230	11.769	916	5750	3090
	43.50	0.435	8.755	12.559	8.599	8.625	5	10.485	10.300	8.931	5.230	11.769	1005	6330	3810
	47.00	0.472	8.681	13.572	8.525	8.625	5	10.485	10.363	8.862	5.230	11.769	1086	6870	4760
	53.50	0.545	8.535	15.546	8.379	8.500	5	10.485	10.485	8.730	5.230	11.769	1244	7930	6620
	58.40	0.595	8.435	16.879	8.279	8.375	5	10.625	10.566	8.680	5.230	11.769	1350	8650	7900
	59.40	0.609	8.407	17.250	8.251		5	10.625	10.589	8.608	5.230	11.769	1380	8860	8250

Note: All data published in this catalog is accurate at time of publishing and are subject to change. Please consult JFETC.com for current performance and torque data.

	85 KSI				95 KSI				110 KSI				125 KSI			
Comp.	Joint Strength	Internal Pressure	Collapse Pressure	Comp.	Joint Strength	Internal Pressure	Collapse Pressure	Comp.	Joint Strength	Internal Pressure	Collapse Pressure	Comp.	Joint Strength	Internal Pressure	Collapse Pressure	Comp.
kips	kips	psi	psi	kips	kips	psi	psi	kips	kips	psi	psi	kips	kips	psi	psi	kips
289	384	7440	5130	307	429	8310	5380	343	497	9630	5630	397	564	10940	5890	451
318	422	8220	6510	337	471	9190	6940	377	546	10640	7480	437	620	12090	7890	496
373	495	9760	9230	396	554	10910	10020	443	641	12640	11110	513	729	14360	12090	583
424	564	11220	11810	451	630	12540	12930	504	729	14530	14540	583	829	16510	16060	663
481	639	12870	13440	511	714	14390	15020	571	826	16660	17390	661	939	18930	19760	751
503	668	13520	14050	534	746	15110	15700	597	864	17500	18180	691	982	19890	20660	785
367	487	6470	3590	390	545	7230	3800	436	631	8370	4030	505	717	9510	4170	573
444	590	7900	5950	472	659	8830	6310	527	763	10230	6730	610	867	11620	7020	694
520	691	9360	8530	553	773	10460	9220	618	895	12120	10160	716	1017	13770	11000	813
587	780	10670	10820	624	872	11920	11820	697	1010	13800	13230	808	1147	15680	14540	918
426	566	6740	3900	453	632	7530	4150	506	732	8720	4440	586	832	9910	4650	666
483	642	7690	5580	513	717	8600	5890	574	830	9960	6230	664	944	11310	6450	755
541	718	8670	7300	575	803	9690	7840	642	929	11220	8530	744	1056	12750	9110	845
596	792	9630	8990	634	885	10760	9740	708	1025	12460	10780	820	1165	14160	11710	932
651	865	10580	10680	692	966	11830	11650	773	1119	13700	13030	895	1272	15560	14320	1017
701	932	11480	12100	745	1041	12830	13430	833	1206	14850	15130	964	1370	16880	16740	1096
801	1064	13280	13820	851	1189	14840	15450	951	1377	17190	17890	1102	1565	19530	20330	1252
872	1158	14600	15050	927	1294	16320	16820	1036	1499	18890	19470	1199	1703	21470	22130	1363
547	726	7320	4910	581	811	8180	5130	649	940	9470	5350	752	1068	10760	5670	854
622	826	8390	6810	661	923	9380	7270	739	1069	10860	7870	855	1215	12340	8340	972
716	951	9750	9220	761	1063	10900	10000	851	1231	12620	11080	985	1399	14340	12060	1119
798	1060	10960	11350	848	1185	12250	12410	948	1372	14190	13930	1097	1559	16120	15350	1247
841	1117	11610	12230	894	1248	12970	13670	999	1445	15020	15440	1156	1643	17070	17110	1314
856	1137	11420	12050	909	1271	12760	13320	1016	1471	14780	15000	1177	1672	16790	16600	1337
586	778	6070	3140	622	869	6780	3290	695	1006	7860	3420	805	1144	8930	3470	915
661	879	6900	4180	703	982	7710	4360	786	1137	8930	4690	910	1292	10140	4930	1034
740	982	7760	5700	786	1098	8670	6020	878	1271	10040	6400	1017	1445	11410	6640	1156
817	1085	8620	7220	868	1212	9640	7740	970	1404	11160	8420	1123	1595	12680	8980	1276
904	1200	9610	8960	960	1341	10740	9700	1073	1553	12430	10740	1242	1765	14130	11660	1412
656	872	5440	2410	697	974	6080	2470	779	1128	7040	2470	902	1282	8000	2470	1025
733	974	6100	3180	779	1088	6820	3330	870	1260	7900	3470	1008	1432	8980	3530	1145
804	1068	6720	3890	854	1193	7510	4130	954	1381	8700	4420	1105	1570	9890	4620	1256
869	1154	7290	4880	923	1289	8150	5090	1031	1493	9440	5300	1194	1697	10730	5630	1357
995	1321	8420	6870	1057	1477	9410	7340	1182	1710	10900	7950	1368	1943	12390	8440	1555
1080	1435	9200	8230	1148	1604	10280	8880	1283	1857	11900	9770	1485	2110	13520	10540	1688
1104	1466	9410	8610	1173	1639	10520	9320	1311	1897	12180	10280	1518	2156	13840	11130	1725

JFEBEAR™ SC COUPLINGS



STANDARD CONNECTIONS			PIPE		CONNECTION		
OD	Nominal Weight	Nominal Wall	Nominal Pipe ID	Pipe Area	Standard Coupling OD	SC90 Coupling OD	SC80 Coupling OD
in	lb/ft	in	in	in ²	in	in	in
2 3/8	4.60	0.190	1.995	1.304	2.728	2.652	2.621
	5.80	0.254	1.867	1.692	2.826	2.735	2.695
	6.60	0.295	1.785	1.928	2.883	2.784	2.739
	7.35	0.336	1.703	2.152	2.883	2.830	2.781
2 7/8	6.40	0.217	2.441	1.812	3.304	3.176	3.140
	7.80	0.276	2.323	2.254	3.368	3.255	3.211
	8.60	0.308	2.259	2.484	3.391	3.295	3.247
	9.35	0.340	2.195	2.708	3.391	3.334	3.282
	10.50	0.392	2.091	3.058	3.514	3.394	3.336
	11.50	0.440	1.995	3.366	3.514	3.445	3.383
3 1/2	7.70	0.216	3.068	2.228	3.883	3.781	3.743
	9.20	0.254	2.992	2.590	3.883	3.836	3.792
	10.20	0.289	2.922	2.915	4.000	3.884	3.836
	12.70	0.375	2.750	3.682	4.122	3.995	3.936
	14.30	0.430	2.640	4.147	4.191	4.061	3.996
	15.50	0.476	2.548	4.522	4.191	4.114	4.043
	17.00	0.530	2.440	4.945	4.255	4.172	4.096
4	9.50	0.226	3.548	2.680	4.384	4.281	4.241
	10.70	0.262	3.476	3.077	4.450	4.334	4.288
	13.20	0.330	3.340	3.805	4.535	4.429	4.374
	14.80	0.380	3.240	4.322	4.587	4.495	4.434
	16.10	0.415	3.170	4.674	4.612	4.540	4.474
4 1/2	11.60	0.250	4.000	3.338	5.000	4.822	4.778
	12.60	0.271	3.958	3.600	5.000	4.853	4.806
	13.50	0.290	3.920	3.836	5.051	4.881	4.831
	15.20	0.337	3.826	4.407	5.148	4.948	4.891
	17.00	0.380	3.740	4.918	5.148	5.007	4.944
	18.90	0.430	3.640	5.498	5.148	5.073	5.003
	21.50	0.500	3.500	6.283	5.324	5.160	5.082
	23.70	0.560	3.380	6.932	5.324	5.232	5.147
5	13.00	0.253	4.494	3.773	5.563	5.318	5.273
	15.00	0.296	4.408	4.374	5.563	5.383	5.331
	18.00	0.362	4.276	5.275	5.639	5.478	5.416
	21.40	0.437	4.126	6.264	5.707	5.580	5.508
	23.20	0.478	4.044	6.791	5.750	5.634	5.557
	24.10	0.500	4.000	7.069	5.750	5.662	5.582

Note: All data published in this catalog is accurate at time of publishing and are subject to change. Please consult JFETC.com for current performance and torque data.

STANDARD CONNECTIONS			PIPE		CONNECTION		
OD	Nominal Weight	Nominal Wall	Nominal Pipe ID	Pipe Area	Standard Coupling OD	SC90 Coupling OD	SC80 Coupling OD
in	lb/ft	in	in	in ²	in	in	in
5 1/2	15.50	0.275	4.950	4.514	6.050	5.855	5.806
	17.00	0.304	4.892	4.962	6.050	5.899	5.845
	20.00	0.361	4.778	5.828	6.104	5.982	5.920
	23.00	0.415	4.670	6.630	6.135	6.058	5.988
	26.00	0.476	4.548	7.513	6.262	6.141	6.063
	26.80	0.500	4.500	7.854	6.262	6.173	6.091
6 5/8	20.00	0.288	6.049	5.734	7.161	6.995	6.942
	24.00	0.352	5.921	6.937	7.277	7.092	7.030
	28.00	0.417	5.791	8.133	7.346	7.188	7.116
	32.00	0.475	5.675	9.177	7.390	7.271	7.190
7	23.00	0.317	6.366	6.655	7.693	7.404	7.347
	26.00	0.362	6.276	7.549	7.693	7.473	7.409
	29.00	0.408	6.184	8.449	7.693	7.542	7.470
	32.00	0.453	6.094	9.317	7.693	7.607	7.529
	35.00	0.498	6.004	10.172	7.829	7.672	7.587
	38.00	0.540	5.920	10.959	7.829	7.730	7.639
	42.70	0.625	5.750	12.517	8.045	7.845	7.743
	46.40	0.687	5.626	13.625	8.045	7.925	7.815
7 5/8	29.70	0.375	6.875	8.541	8.277	8.111	8.043
	33.70	0.430	6.765	9.720	8.277	8.193	8.118
	39.00	0.500	6.625	11.192	8.500	8.296	8.209
	42.80	0.562	6.501	12.470	8.500	8.384	8.288
	45.30	0.595	6.435	13.141	8.538	8.429	8.329
7 3/4	46.10	0.595	6.560	13.374	8.665	8.556	8.456
8 5/8	32.00	0.352	7.921	9.149	9.318	9.080	9.016
	36.00	0.400	7.825	10.336	9.318	9.155	9.082
	40.00	0.450	7.725	11.557	9.318	9.231	9.151
	44.00	0.500	7.625	12.763	9.625	9.305	9.217
	49.00	0.557	7.511	14.118	9.625	9.388	9.292
9 5/8	36.00	0.352	8.921	10.254	10.485	10.084	10.019
	40.00	0.395	8.835	11.454	10.485	10.151	10.079
	43.50	0.435	8.755	12.559	10.485	10.214	10.135
	47.00	0.472	8.681	13.572	10.485	10.270	10.186
	53.50	0.545	8.535	15.546	10.485	10.380	10.284
	58.40	0.595	8.435	16.879	10.625	10.453	10.350
	59.40	0.609	8.407	17.250	10.625	10.473	10.368

JFEBEAR™ connections within a given OD are interchangeable with the following provisions:

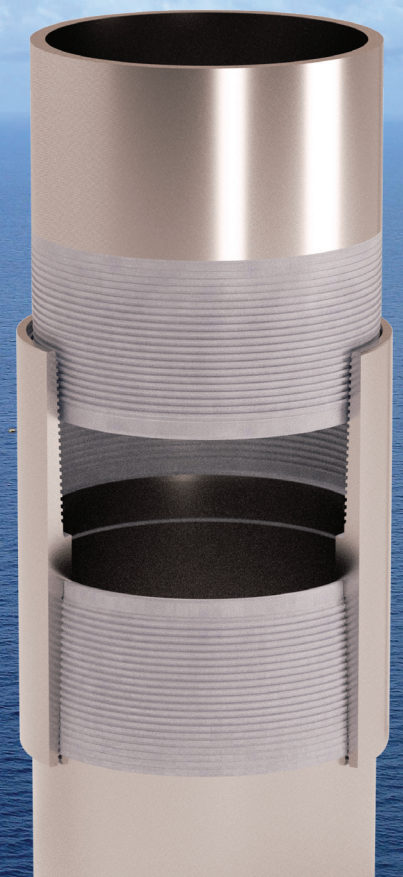
- Pin and box are optimized based on the specified pipe weight. When a lighter weight connection is made up with a heavier weight, a small step may occur depending on the differing connection ID's. Refer to the connection dimensional data to determine the step dimension. When making up a lighter weight to a heavier weight, the torque values for the lighter weight should be used.
- When making up a lighter weight to a heavier weight, the torque values for the lighter weight should be used. Connection performance is that of the lighter weight/lower yield strength connection.
- When making up connections of differing grades (yield strengths), the torque values of the lower yield strength should be used.
- Connection performance is that of the lighter weight/lower yield strength connection.

**Note: For more information pertaining to interchangeability data, please contact JFE-TC.*

JFEBEAR™ connections are available with the Hunting CLEAR-RUN™ advantage



- ✓ Environmentally friendly - OSPAR Yellow rating
- ✓ Zero contamination of well-bore & formation
- ✓ Zero offshore discharge
- ✓ No fouling of completion & wire-line equipment
- ✓ Field proven - over 6,000,000 feet run
- ✓ Safer workspaces, both onshore and offshore
- ✓ Improved galling resistance
- ✓ Improved operational efficiency
- ✓ Delivered rig ready; no need to clean up and re-dope



JFE-TC Global Presence

www.jfetc.com



Technical Centers

JFE-TC HOUSTON

10777 Westheimer, Suite 1010
Houston, TX 77042
USA

TEL +1 713-986-9000

JFE-TC SINGAPORE

31 Jurong Port Rd
05-10 Jurong Logistics Hub
Singapore 619115

TEL +65-6264-1801

Regional Offices

JFE-TC UK ABERDEEN

56 Queens Road,
Aberdeen, AB15 4YE

TEL +44 (0) 1224 209333
DIRECT +44 (0) 1224 810129
FAX +44 (0) 1224 209501

JFE-TC DUBAI

P.O. Box 18192, LOB 16 Office No. 404,
Jebel Ali, Dubai, UAE.

(c/o Marubeni Itochu Steel Inc Jebel Ali Office)

TEL +971-4-8870-988
FAX +971-4-8870-405

JFE-TC BEIJING

Unit 1717-1718 Tower B, Gemdale Plaza,
No. 91, Jianguo Road, Chaoyang District,
Beijing, China

(c/o M-I Tubulars(Beijing) Co., Limited)

TEL +86-10-8580-5881



Cat. No. E1E-014-08

HOUSTON

10777 Westheimer, Suite 1010
Houston, TX 77042
USA

TEL +1 713-986-9000

JFE-TC
technical
centers
jfec.com

SINGAPORE

31 Jurong Port Rd
06-10 Jurong Logistics Hub
Singapore 619115

TEL +65-6264-1801

JFE Steel Corporation

<http://www.jfe-steel.co.jp/en/>

TOKYO HEAD OFFICE	Hibiya Kokusai Building, 2-3 Uchisaiwaicho 2-chome, Chiyodaku, Tokyo 100-0011, Japan Phone : (81)3-3597-3111 Fax : (81)3-3597-4860
NEW YORK OFFICE	JFE Steel America, Inc. 600 Third Avenue, 12th Floor, New York, NY 10016, U.S.A. Phone : (1)212-310-9320 Fax : (1)212-308-9292
HOUSTON OFFICE	JFE Steel America, Inc., Houston Office 10777 Westheimer, Suite 230, Houston, TX 77042, U.S.A. Phone : (1)713-532-0052 Fax : (1)713-532-0062
BRISBANE OFFICE	JFE Steel Australia Resources Pty Ltd. Level 19, CPA Centre, 307 Queen St, Brisbane, QLD 4001, Australia Phone : (61)7-3229-3855 Fax : (61)7-3229-4377
RIO DE JANEIRO OFFICE	JFE Steel do Brasil LTDA / JFE Steel Corporation, Rio de Janeiro Office Praia de Botafogo, 228 Setor B, Salas 508 & 509, Botafogo, CEP 22250-040, Rio de Janeiro-RJ, Brazil Phone : (55)21-2553-1132 Fax : (55)21-2553-3430
LONDON OFFICE	JFE Steel Europe Limited 15th Floor, The Broadgate Tower, 20 Primrose Street, London EC2A 2EW, U.K. Phone : (44)20-7426-0166 Fax : (44)20-7247-0168
DUBAI OFFICE	JFE Steel Corporation, Dubai Office P.O.Box 261791 LOB19-1208, Jebel Ali Free Zone Dubai, U.A.E. Phone : (971)4-884-1833 Fax : (971)4-884-1472
NEW DELHI OFFICE	JFE Steel India Private Limited 1101, 11th Floor, Unitech's Signature Tower, Tower-A, South City-I, NH-8, Gurgaon, Haryana, 122002, India Phone : (91)124-426-4981 Fax : (91)124-426-4982
MUMBAI OFFICE	JFE Steel India Private Limited Mumbai Office 308, A Wing, 215 Atrium, Andheri - Kurla Road, Andheri (East), Mumbai - 400093, Maharashtra, India Phone : (91)22-3076-2760 Fax : (91)22-3076-2764
SINGAPORE OFFICE	JFE Steel Asia Pte. Ltd. 16 Raffles Quay, No. 15-03, Hong Leong Building, 048581, Singapore Phone : (65)6220-1174 Fax : (65)6224-8357
BANGKOK OFFICE	JFE Steel (Thailand) Ltd. 22nd Floor, Abdulrahim Place 990, Rama IV Road, Bangkok 10500, Thailand Phone : (66)2-636-1886 Fax : (66)2-636-1891
VIETNAM OFFICE	JFE Steel Vietnam Co., Ltd. Unit 1401, 14th Floor, Kumho Asiana Plaza, 39 Le Duan Street, Dist 1, HCMC, Vietnam Phone : (84)8-3825-8576 Fax : (84)8-3825-8562
JAKARTA OFFICE	JFE Steel Corporation, Jakarta Office 16th Floor Summitmas II, JL Jendral Sudirman Kav. 61-62, Jakarta 12190, Indonesia Phone : (62)21-522-6405 Fax : (62)21-522-6408
MANILA OFFICE	JFE Steel Corporation, Manila Office 23rd Floor 6788 Ayala Avenue, Oledan Square, Makati City, Metro Manila, Philippines Phone : (63)2-886-7432 Fax : (63)2-886-7315
SEOUL OFFICE	JFE Steel Korea Corporation 6th Floor, Geumgang-Tower, 889-13, Daechi-dong, Gangnam-gu, Seoul, 135-570, Korea Phone : (82)2-3468-4130 Fax : (82)2-3468-4137
BEIJING OFFICE	JFE Steel Corporation Beijing 1009 Beijing Fortune Building No.5, Dongsanhuan North Road, Chaoyang District, Beijing, 100004, P.R.China Phone : (86)10-6590-9051 Fax : (86)10-6590-9056
SHANGHAI OFFICE	JFE Consulting (Shanghai) Co., Ltd. Room 801, Building A, Far East International Plaza, 319 Xianxia Road, Shanghai 200051, P.R.China Phone : (86)21-6235-1345 Fax : (86)21-6235-1346
GUANGZHOU OFFICE	JFE Consulting (Guangzhou) Co., Ltd./ JFE Steel Corporation, Guangzhou Office Room 3901, Citic Plaza, 233 Tian He North Road, Guangzhou 510613, P.R.China Phone : (86)20-3891-2467 Fax : (86)20-3891-2469

Notice

While every effort has been made to ensure the accuracy of the information contained within this publication, the use of the information is at the reader's risk and no warranty is implied or expressed by JFE Steel Corporation with respect to the use of information contained herein. The information in this publication is subject to change or modification without notice. Please contact the JFE Steel office for the latest information.